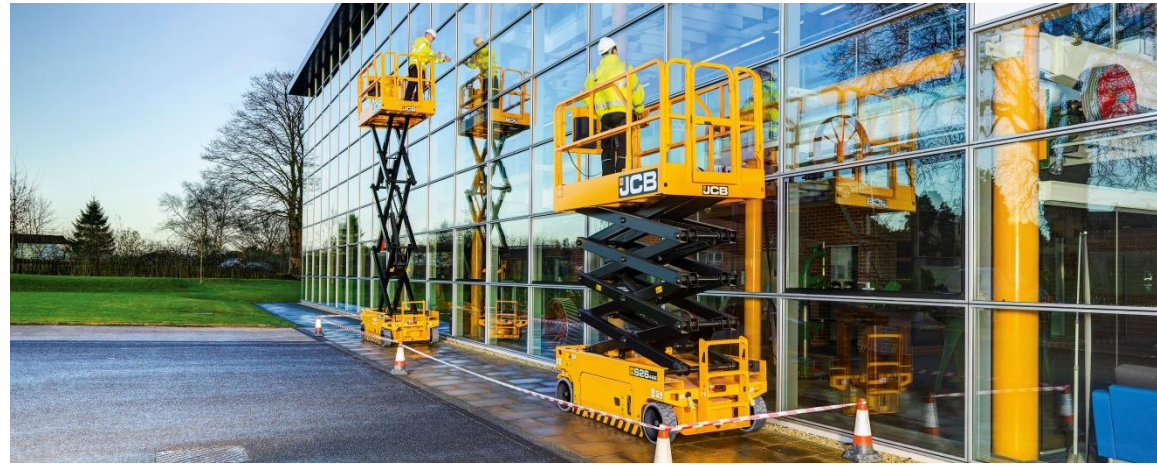


ELECTRIC SCISSOR | Range Specifications



MODEL		S1530E	S1930E	S2032E	S2046E	S2632E	S2646E	S3246E	S4046E	S4550E
Max. Platform Height	m / ft ins	4.6 / 15'1"	5.8 / 19'0"	6.3 / 20'8"	6.3 / 20'8"	8.1 / 26'6"	8.1 / 26'6"	10 / 32'9"	11.9 / 39'0"	13.8 / 45'3"
Max. Working Height	m / ft ins	6.6 / 21'1"	7.8 / 25'0"	8.3 / 26'8"	8.3 / 26'8"	10.1 / 32'6"	10.1 / 32'6"	12 / 38'9"	13.9 / 45'0"	15.8 / 45'0"
Extension Outreach	m / ins	0.9 / 35	0.9 / 35	0.9 / 35	0.9 / 35	0.9 / 35	0.9 / 35	0.9 / 35	0.9 / 35	0.9 / 35
Length (Stowed)	m / ft ins	1.78 / 5'10"	1.78 / 5'10"	2.39 / 7'10"	2.39 / 7'10"	2.39 / 7'10"	2.39 / 7'10"	2.39 / 7'10"	2.39 / 7'10"	2.76 / 9'1"
Width (Stowed)	m / ft ins	0.76 / 2'6"	0.76 / 2'6"	0.81 / 2'8"	1.15 / 3'9"	0.81 / 2'8"	1.15 / 3'9"	1.15 / 3'9"	1.15 / 3'9"	1.25 / 4'1"
Height (Stowed, Guardrails Folded)	m / ft ins	1.84 / 6'0"	1.86 / 6'1"	1.83 / 6'0"	1.83 / 6'0"	1.96 / 6'5"	1.96 / 6'5"	1.86 / 6'1"	1.98 / 6'6"	2.20 / 7'3"
Height (Stowed, Guardrails Unfolded)	m / ft ins	2.11 / 6'11"	2.12 / 6'11"	2.22 / 7'3"	2.22 / 7'3"	2.35 / 7'8"	2.35 / 7'8"	2.48 / 8'2"	2.60 / 8'6"	2.60 / 8'6"
Weight	kg / lbs	1,330 / 2,932	1,526 / 3,364	1,834 / 4,044	2,134 / 4,705	1,972 / 4,348	2,528 / 5,574	2,646 / 5,834	2,996 / 6,606	3,366 / 7,422
Platform Length	m / ins	1.64 / 65	1.64 / 65	2.25 / 89	2.25 / 89	2.25 / 89	2.25 / 89	2.25 / 89	2.25 / 89	2.64 / 104
Platform Width	m / ins	0.76 / 30	0.76 / 30	0.81 / 32	1.15 / 46	1.15 / 32	1.15 / 46	1.15 / 46	1.15 / 46	1.25 / 50
Platform Height	m / ins	1.10 / 43	1.10 / 43	1.10 / 43	1.10 / 43	1.10 / 43	1.10 / 43	1.10 / 43	1.10 / 43	1.10 / 43
Load Capacity	kg / lbs	280 / 615	230 / 505	380 / 840	550 / 1210	250 / 550	450 / 990	320 / 705	320 / 705	227 / 500
Max. Platform Occupants (Outdoor)		-	-	-	2	-	2	-	-	-
Max. Platform Occupants (Indoor)		2	2	2	2	2	2	2	2	2

ELECTRIC SCISSOR | Range Specifications



MODEL		S1530E	S1930E	S2032E	S2046E	S2632E	S2646E	S3246E	S4046E	S4550E
Max. Allowable Side Force (Indoor)	N/ lbf	400 / 90	400 / 90	400 / 90	400 / 90	400 / 90	400 / 90	400 / 90	400 / 90	400 / 90
Max. Allowable Side Force (Outdoor)	N/ lbf	-	-	-	400 / 90	-	400 / 90	-	-	-
Max. Allowable Wind Speed (Outdoor)	m/s / mph	-	-	-	12.5 / 28	-	12.5 / 28	-	-	-
Max. Allowable Slope (Front/Back)	°	3	3	3	3	3	3	3	3	3
Max. Allowable Slope (Side/Side)	°	1.5	1.5	1.5	1.5	1.5	1.5	1.5	1.5	1.5
Ground Clearance (Raised)	m / ins	0.07 / 2.75"	0.07 / 2.75"	0.1 / 4"	0.1 / 4"	0.1 / 4"	0.1 / 4"	0.1 / 4"	0.1 / 4"	0.1 / 4"
Wheelbase	m / ins	1.33 / 52"	1.53 / 60"	1.85 / 73"	1.85 / 73"	1.85 / 73"	1.85 / 73"	1.85 / 73"	1.85 / 73"	2.22 / 87"
Turning Radius (Outside)	m / ft ins	1.49 / 4'11"	1.49 / 4'11"	2.1 / 6'11"	2.35 / 7'8"	2.1 / 6'11"	2.35 / 7'8"	2.35 / 7'8"	2.35 / 7'8"	2.56 / 8'5"
Turning radius (Inside)	m / ins	0.04 / 1.5"	0.04 / 1.5"	0	0	0	0	0	0	0
Gradeability	%	30	25	25	25	25	25	25	25	25
Max Driving Speed (Stowed)	km/h / mph	3.2 / 2	3.2 / 2	3.2 / 2	3.2 / 2	3.2 / 2	3.2 / 2	3.2 / 2	3.2 / 2	3.2 / 2
Max Driving Speed (Raised)	km/h / mph	0.8 / 0.5	0.8 / 0.5	0.8 / 0.5	0.8 / 0.5	0.8 / 0.5	0.8 / 0.5	0.8 / 0.5	0.8 / 0.5	0.8 / 0.5
Rising Speed (Loaded)	s	15~20	15~20	25~30	25~30	30~35	30~35	53~58	63~68	75~85
Falling Speed (Loaded)	s	28~33	25~30	30~35	30~35	35~40	35~40	40~45	45~50	55~63
Solid Tyre Dimensions	mm	305 x115	305 x115	380 x125/	380 x125	380 x125	380 x125	380 x125	380 x125	380 x125
Solid Tyre Dimensions	ins	12 x 4.5	12 x 4.5	15 x 5	15 x 5	15 x 5	15 x 5	15 x 5	15 x 5	15 x 5
Hydraulic System Volume	L / gal	18 / 4.75	18 / 4.75	18 / 4.75	18 / 4.75	18 / 4.75	18 / 4.75	22 / 5.8	22 / 5.8	25 / 6.6
Hydraulic System Pressure	Mpa	24	24	24	24	24	24	24	24	24
Battery (Voltage, QTY, Ah)	V / Ah	6Vx4 / 225	6Vx4 / 225	6Vx4 / 225	6Vx4 / 225	6Vx4 / 225	6Vx4 / 225	6Vx4 / 240	12Vx4 / 150	12Vx4 / 150
Power Unit (DC)	V / kW	24 / 3.3	24 / 3.3	24 / 3.3	24 / 3.3	24 / 3.3	24 / 3.3	24 / 3.3	24 / 3.3	24 / 4.5
Charger Input / Output Voltage	V	100~240 / 25	100~240 / 25	100~240 / 25	100~240 / 25	100~240 / 25	100~240 / 25	100~240 / 25	100~240 / 25	100~240 / 25
Drive & Steer Mode		Front WD, 2WS	Front WD, 2WS	Front WD, 2WS	Front WD, 2WS	Front WD, 2WS	Front WD, 2WS	Front WD, 2WS	Front WD, 2WS	Front WD, 2WS
Brake		Rear 2	Rear 2	Rear 2	Rear 2	Rear 2	Rear 2	Rear 2	Rear 2	Rear 2